

# General operation

## Start the machine :

1. Press the red button on the control panel
2. Press "enter" at the right lower corner of the control panel

## Close the machine:

Press the red button

## Suction:

Press the green button, open—close—auto—open—close—auto.....

You can start or close the air pump on the control panel under auto mode

## Change a new blade:

When you do this thing, you need to be careful and patient , if you are not sure about it, please don't change the depth too much at one time (0.1-0.2mm each time).

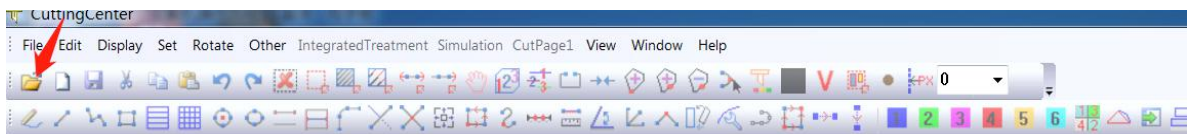
## Maintenance:

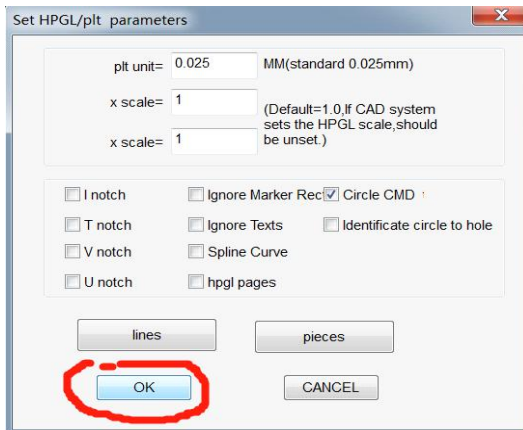
Please keep the machine dry and clean. Depend on the actual situation of the machine, you need to add some liquid oil onto the tracks, such as engine oil or sewing-machine oil. Usually there are 4 tracks on the machine, 2 tracks are on the two sides, the other 2 tracks are on the beam.

## Two cutting mode

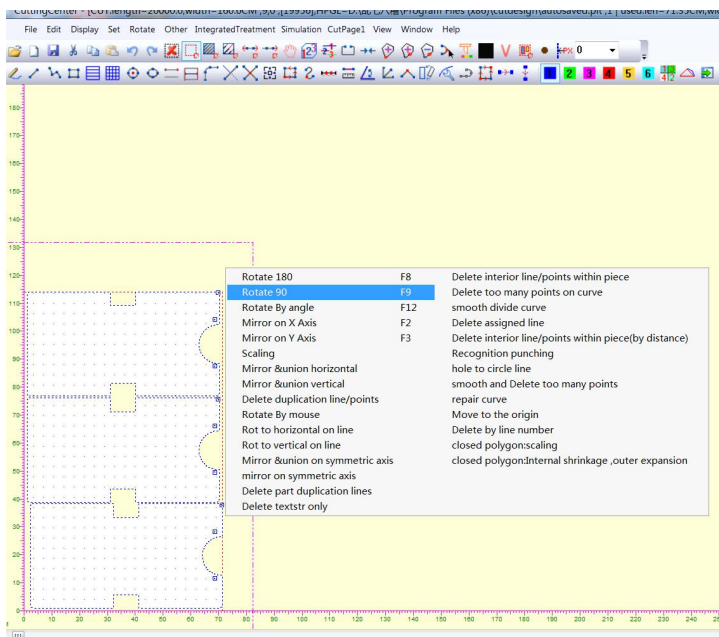
### Mode 1: Cutting a blank material

- Open the file

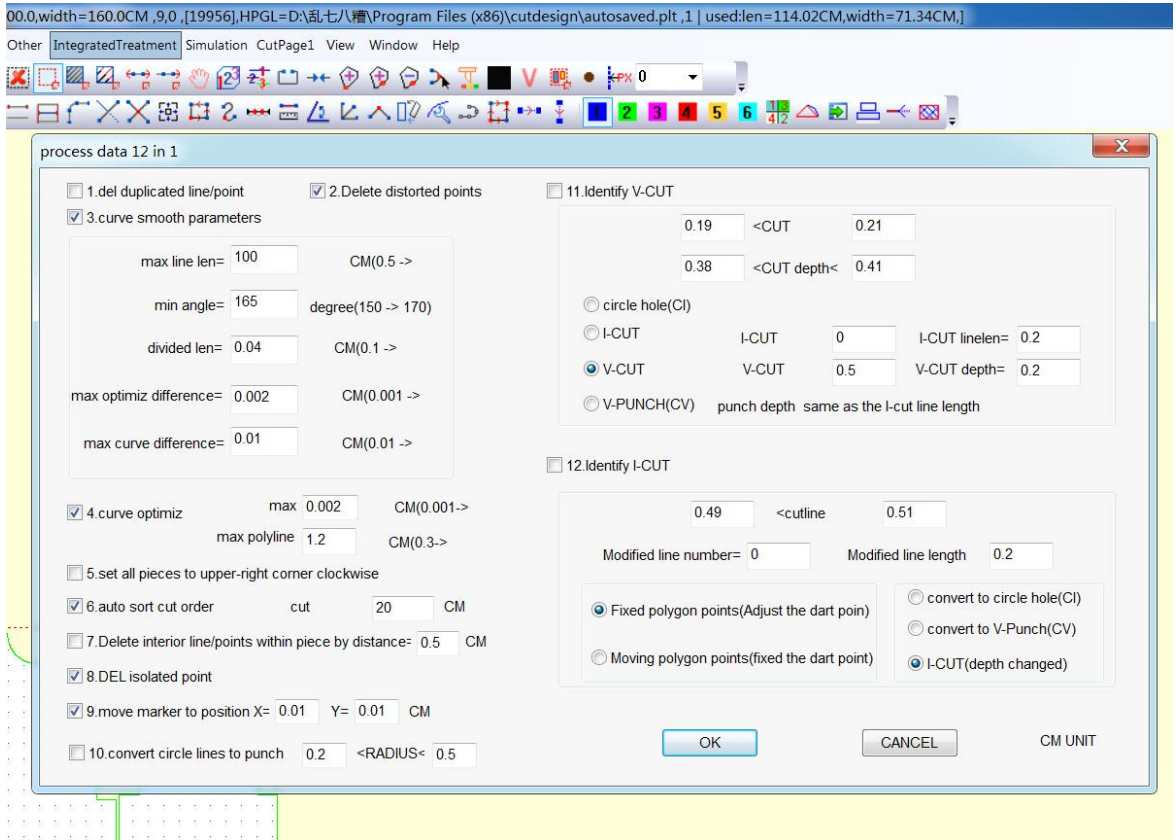




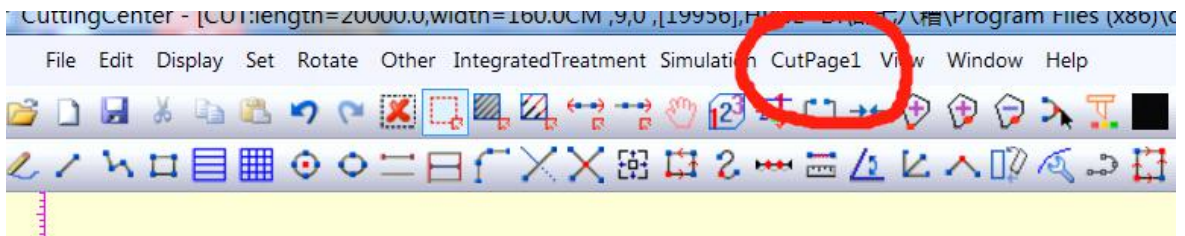
- Adjust the direction: frame select the drawing , right click and select rotation angle.



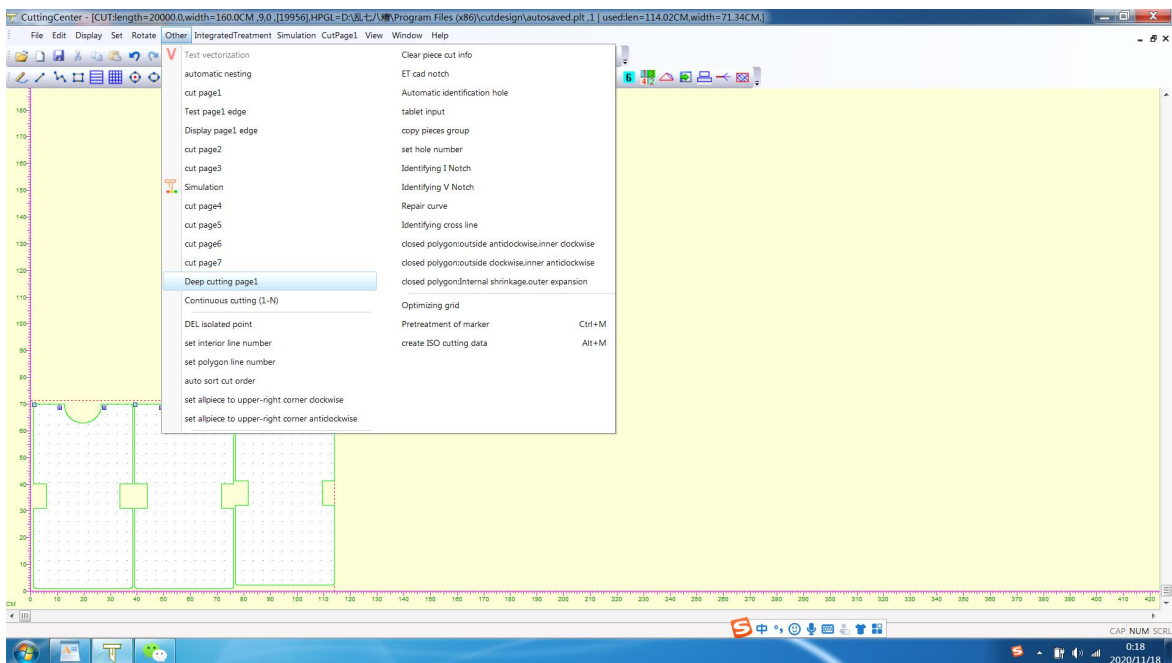
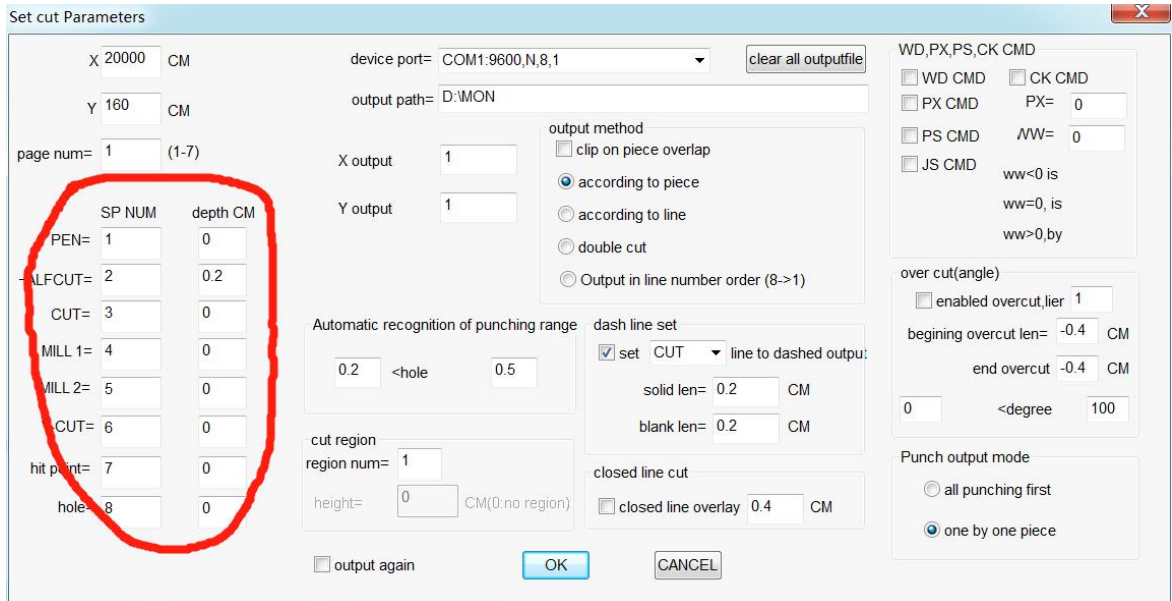
- Click "Intergrated Treatment" and "OK"



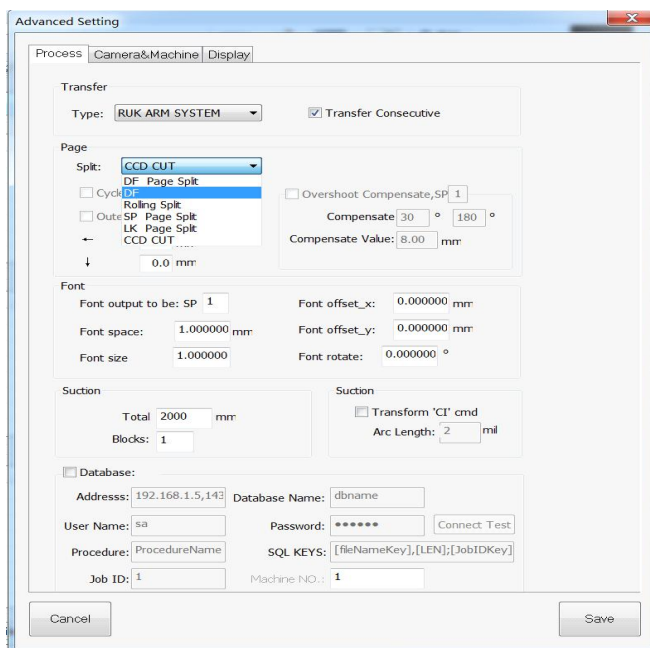
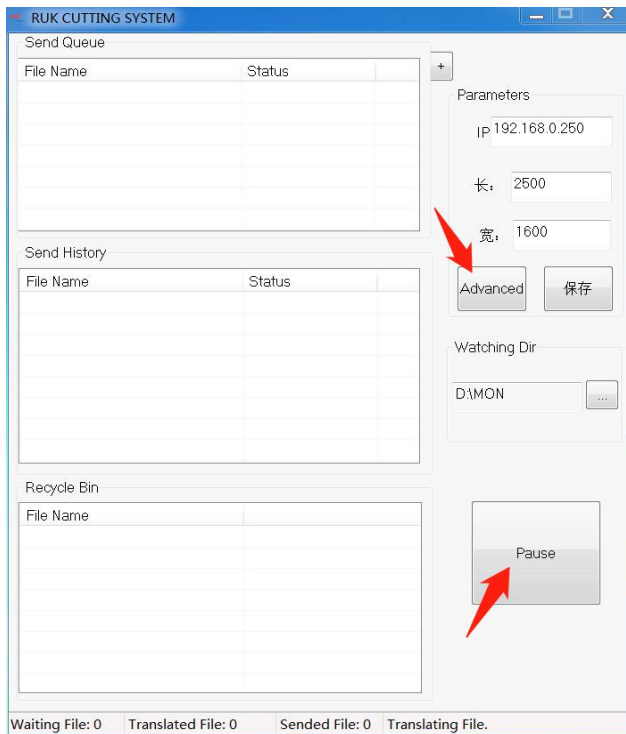
- If there is no need of half cut, click "Cut Page1" directly.



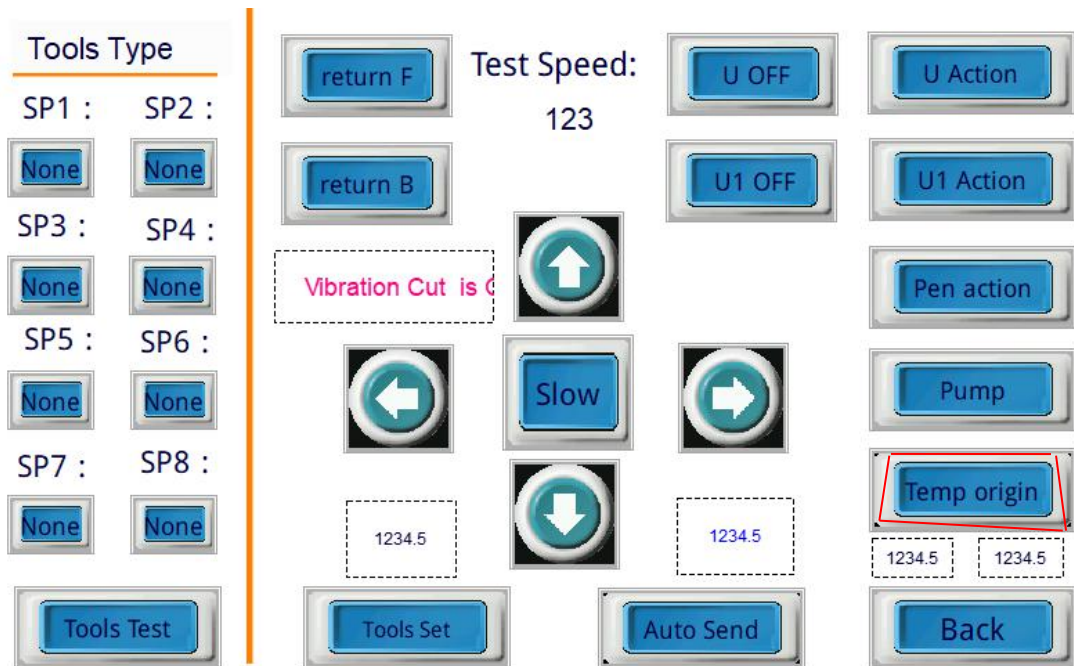
If the material need to be half cut, click "File"-"set cut parameter", then click "Other"-"Deep cut page1"



- Open RUK cutting system and click "Pause"—"Advanced", on the next page select "DF" and save. (If it is "DF" before, pls ignore this step)



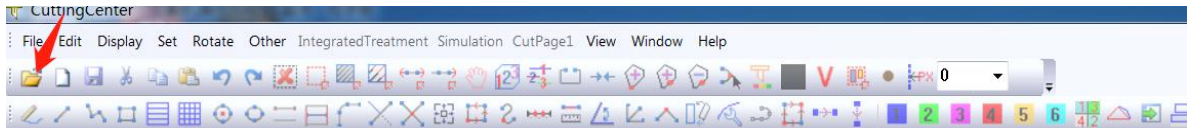
- Move the red cross to the position where you want to start cutting, then press "Temp Origin" once or twice, make sure that the values on the left and right sides are the same.



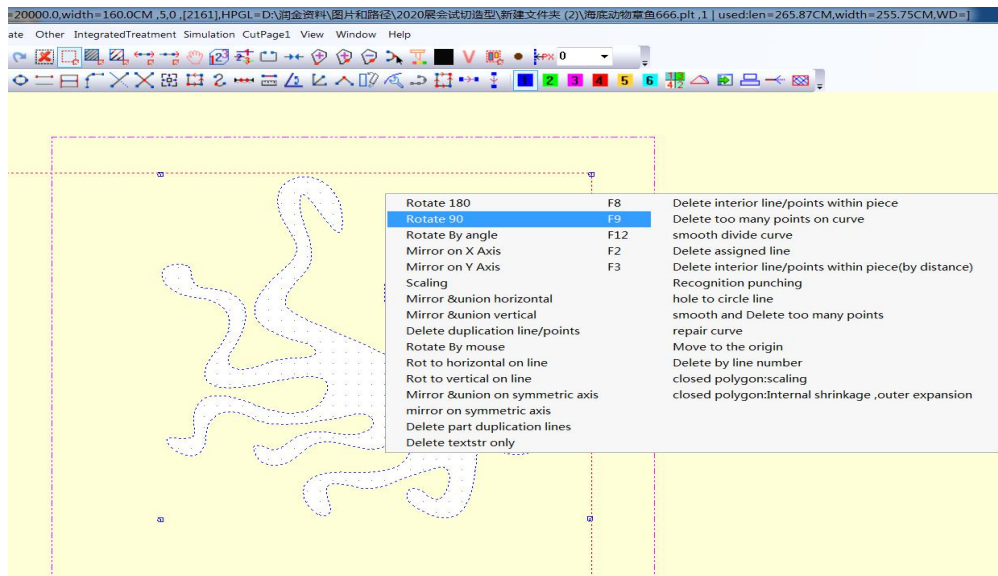
- Press "back" to let the the control panel return to the home page, then machine will cut the material automatically.

## Mode 2: Cut a printed material

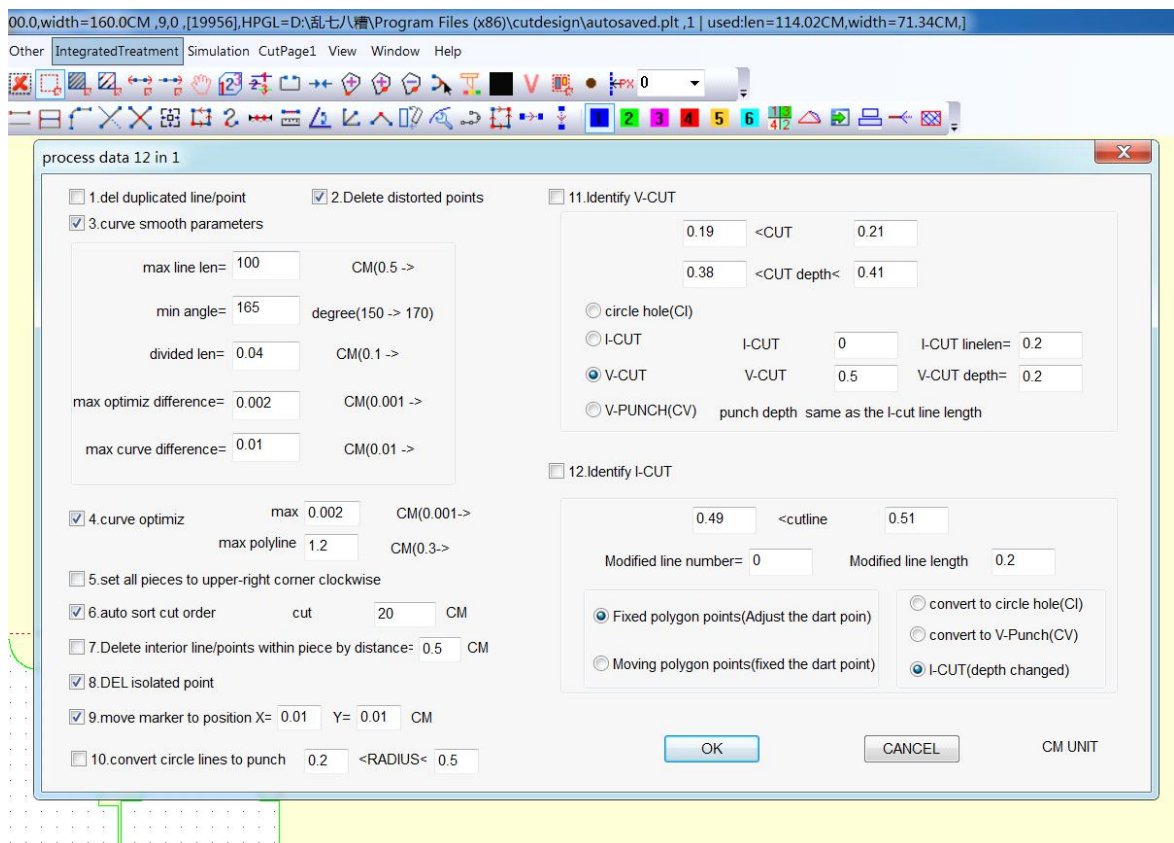
- Open the file



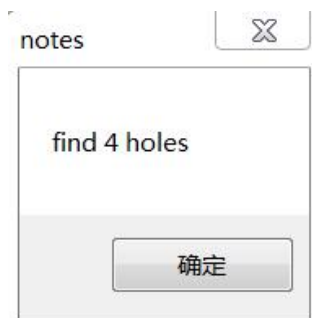
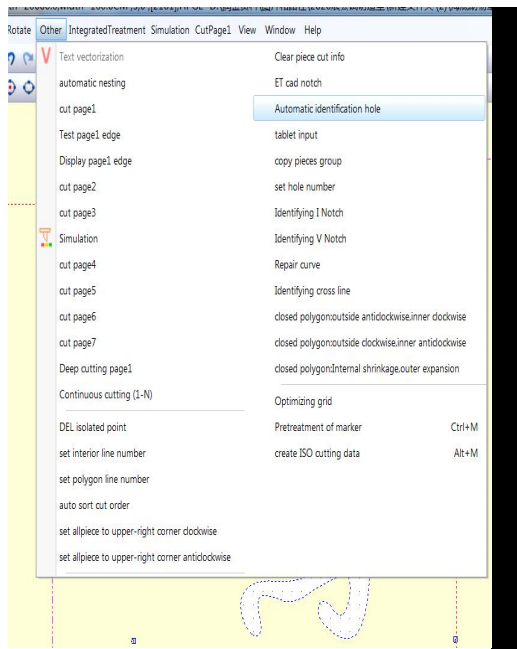
- Adjust the direction: frame select the drawing , right click and select rotation angle.



- Click "IntegratedTreatment" and "OK"

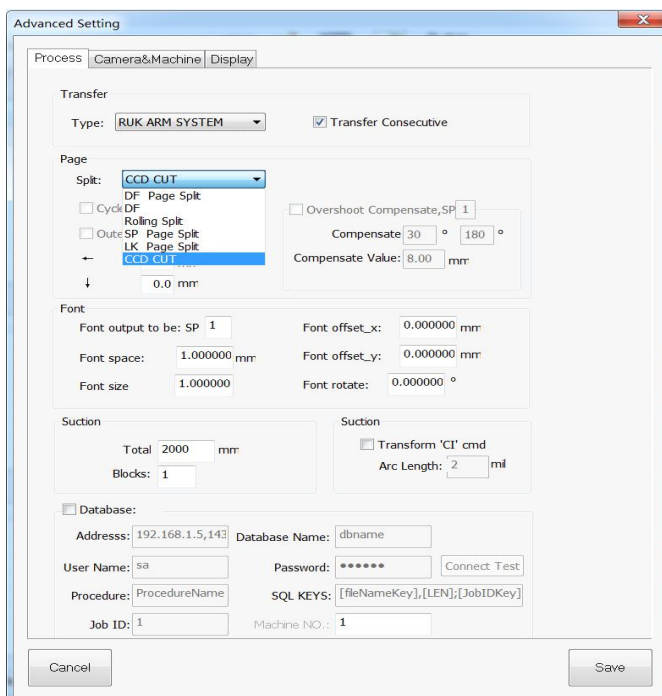
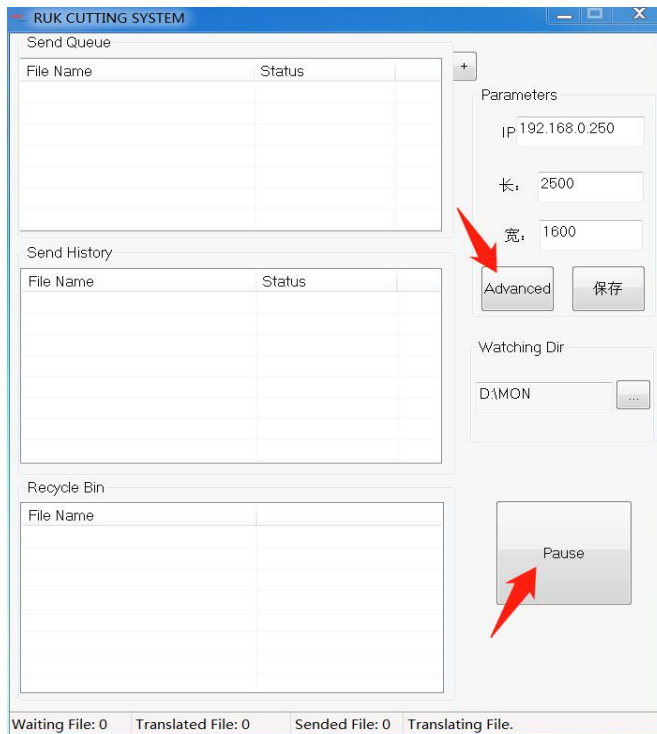


- Click "Other" and "Automatic identification hole"



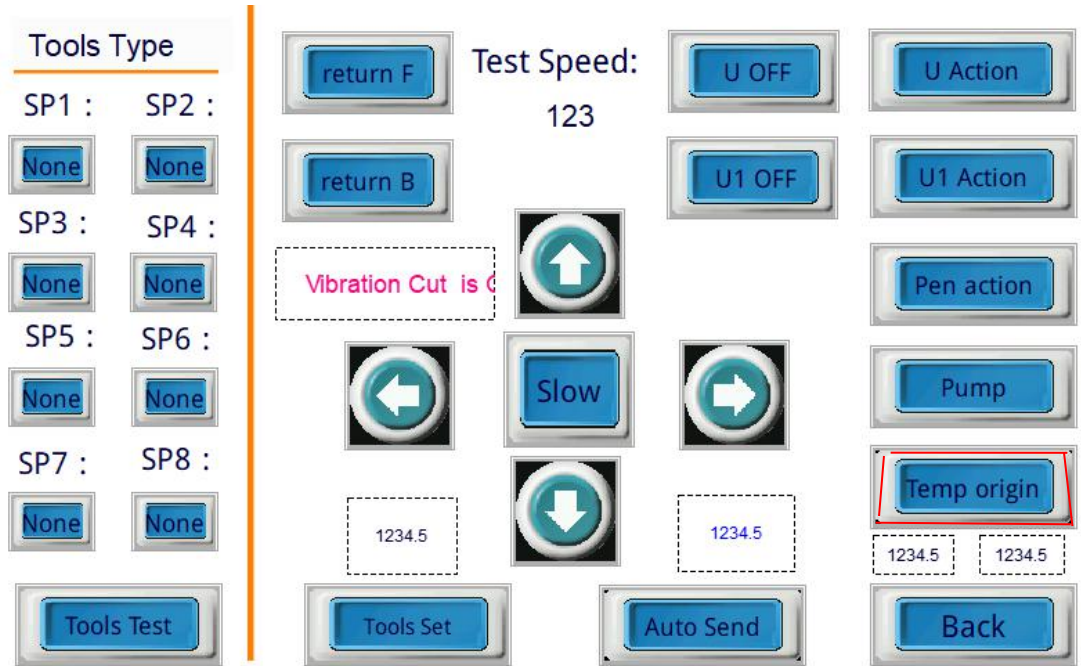
- Open RUK cutting system and click "Pause"—“Advanced”, on the next page select "CCD CUT" and save. (If it is "CCD CUT" before, please ignore this step.)



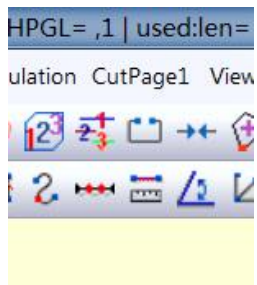


- On the control panel press "Temp Origin" to cancel it. (If the value here is 0 before, you can ignore this step.)

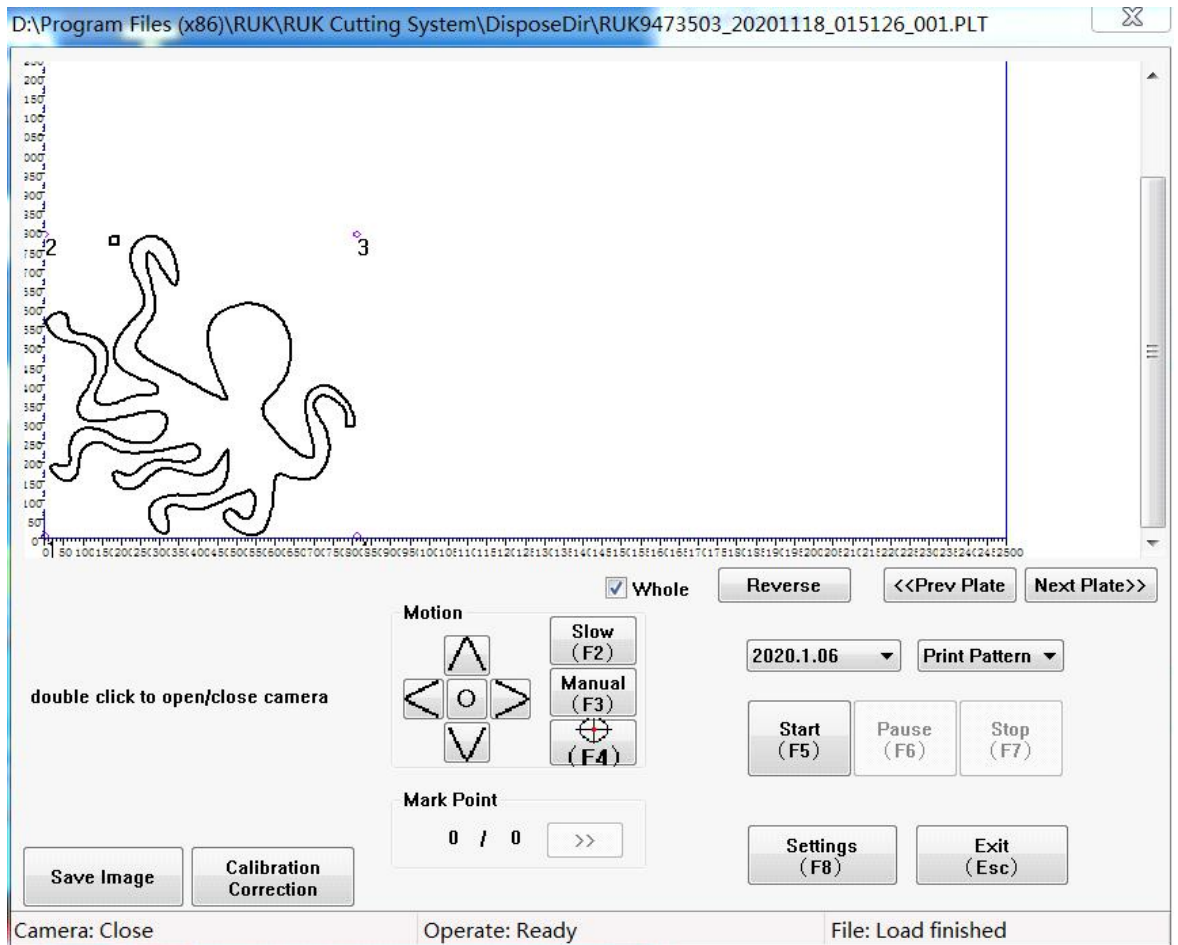




- Click "Cut Page 1" and confirm.



- On the next page double click to open the camera.



9、 Move the camera and let the first mark point (which is close to the origin) appear completely, then click "F4", the camera will search the first mark point, then click "F5", camera will search the rest 3 mark points and begin to cut the material automatically.

